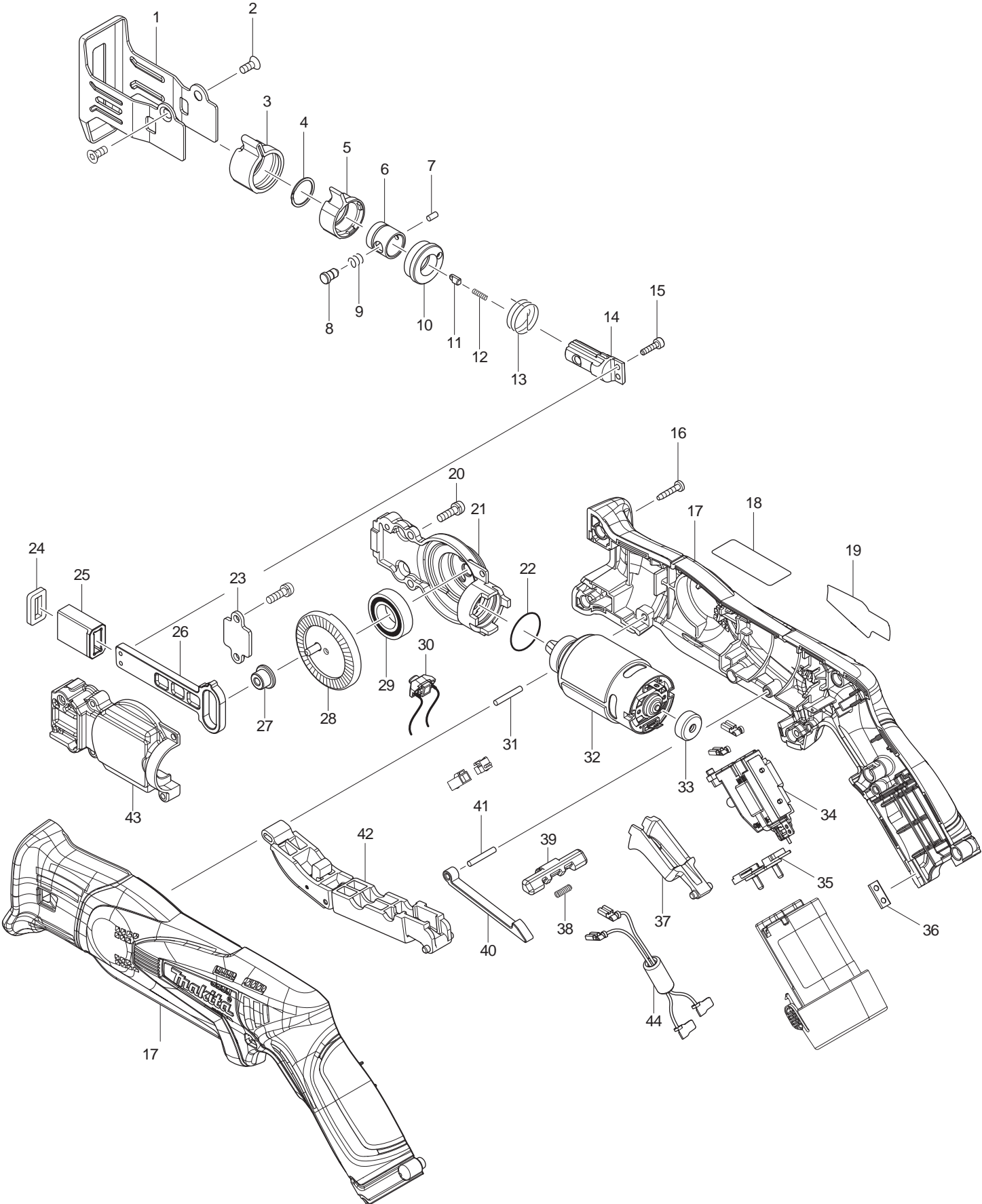




11 - 2011
RJ01 / RJ01Z
12V RECIPRO SAW



Item No.	Type	Sub	Part No.	Description	Qty	Unit
001			346524-5	SHOE	1	PC.
002			265035-0	COUNTERSUNK HEAD SCREW M4X10	2	PC.
003			424466-4	PROTECTOR	1	PC.
004			257981-1	RETAINING RING (EXT)16	1	PC.
005			310496-0	DRIVING SLEEVE	1	PC.
006			331963-2	GUIDE SLEEVE	1	PC.
007			268094-3	PIN 3	1	PC.
008			256492-3	SHOULDER PIN 5	1	PC.
009			233345-3	COMPRESSION SPRING 6	1	PC.
010			453071-0	CONNECTING SLEEVE	1	PC.
011		1	310495-2	PUSH PIN	1	PC.
		3	310912-2	PUSH PIN	1	PC.
012		2	232472-3	COMPRESSION SPRING 2	1	PC.
013			233594-2	TORTION SPRING 17	1	PC.
014			326113-2	BLADE GUIDE	1	PC.
015			265910-0	HEX. SOCKET HEAD BOLT M3X12	2	PC.
016			266429-2	TAPPING SCREW 3X16	8	PC.
017			187270-9	HOUSING SET	1	PC.
018			890164-6	CAUTION LABEL (FR SP)	1	PC.
019			896378-5	NAME PLATE F/RJ01	1	PC.
020			266747-8	PAN HEAD SCREW M4X14 WITH WM	5	PC.
021			318805-7	GEAR HOUSING	1	PC.
022			213961-7	O RING 22	1	PC.
023			346525-3	PLATE	1	PC.
024			423424-7	SPONGE SEAL	1	PC.
025			313220-0	SLIDER GUIDE	1	PC.
026			313221-8	SLIDER	1	PC.
027			326112-4	COLLARED SLEEVE 4	1	PC.
028			141127-8	GEAR COMPLETE	1	PC.
029			211242-3	BALL BEARING 6902ZZ	1	PC.
030			620028-8	LED CIRCUIT	1	PC.
031			256158-5	PIN 3	1	PC.
032			629914-0	DC MOTOR	1	PC.
033			424467-2	CAP	1	PC.
034			650666-2	SWITCH	1	PC.
035			643830-2	TERMINAL	1	PC.
036			345998-7	SET PLATE	1	PC.
037			453072-8	SWITCH LEVER R	1	PC.
038			233438-6	COMPRESSION SPRING 4	1	PC.
039			453070-2	LOCK OFF LEVER R	1	PC.
040			313219-5	LINK	1	PC.
041			256158-5	PIN 3	1	PC.
042			141128-6	SWITCH LEVER F COMPLETE	1	PC.
043			318806-5	GEAR HOUSING COVER	1	PC.
046			126201-3	BLADE CLAMP ASSEMBLY	1	PC.
		INC.		Item No. 3-14		
C01			872609-6	CARTON F/ RJ01Z	1	PC.
C01A			872617-7	CARTON F/ RJ01	1	PC.
D01			654069-2	RECEPTACLE	2	PC.
D02			654281-4	RECEPTACLE	2	PC.
<u>ACCESSORIES</u>						
A01			B-20432	RECIPRO BLADE BIM 6T 4" 5PK, F/WOOD	1	PC.
A02			723063-A-5	RECIPRO BLADE BIM 18T 4" 5PK, F/METAL	1	PC.
A03			DC10WB	CHARGER DC10WB	1	PC.
A04			195332-9	12V MAX LI-ION BATTERY BL1014	1	PC.

Item No.	Type	Sub	Part No.	Description	Qty	Unit
A05			824993-5	PLASTIC CARRYING CASE	1	PC.
		INC.	162315-4	LATCH	2	PC.
		INC.	452137-3	HANDLE	1	PC.
A06	Opt.		B-20454	RECIPRO BLADE BIM 14/18T 4" 5PK, MULTI PURPOSE	1	PC.
	Opt.		723062-A-5	RECIPRO BLADE BIM 4T 4" 5PK, F/METAL	1	PC.